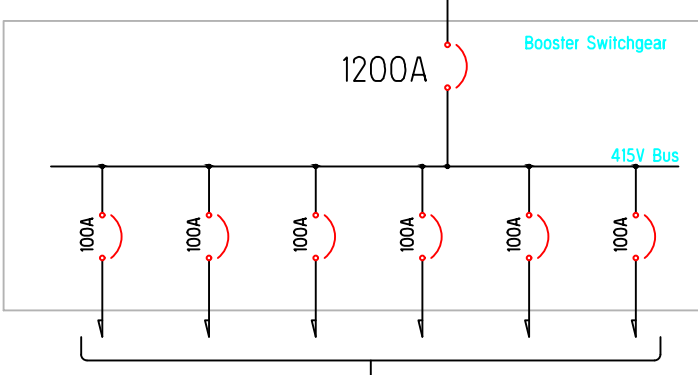
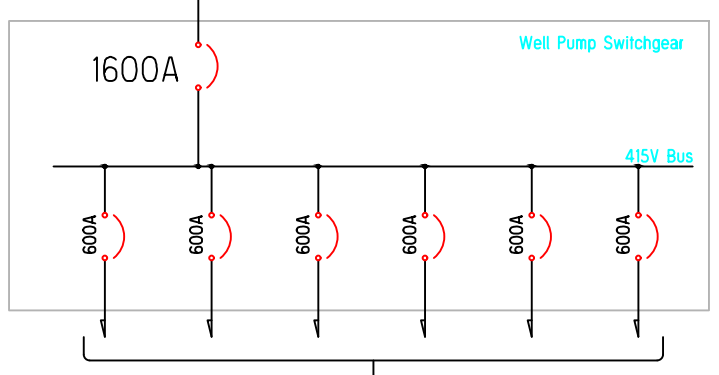
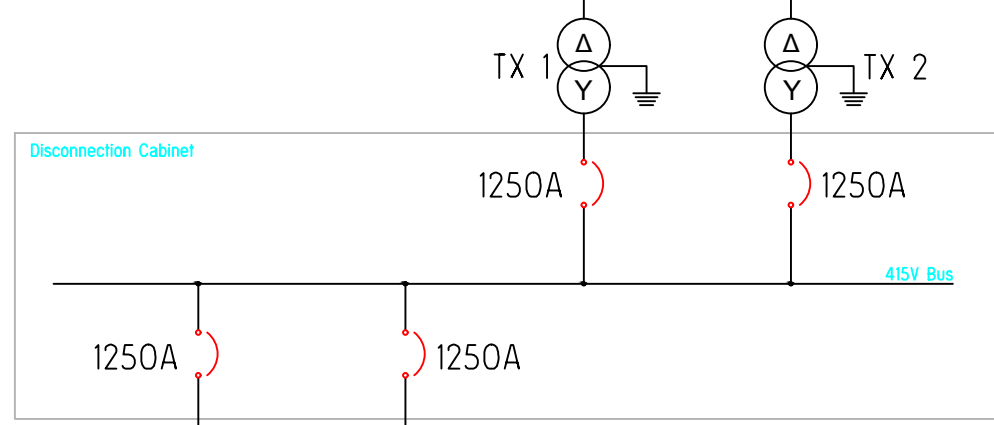
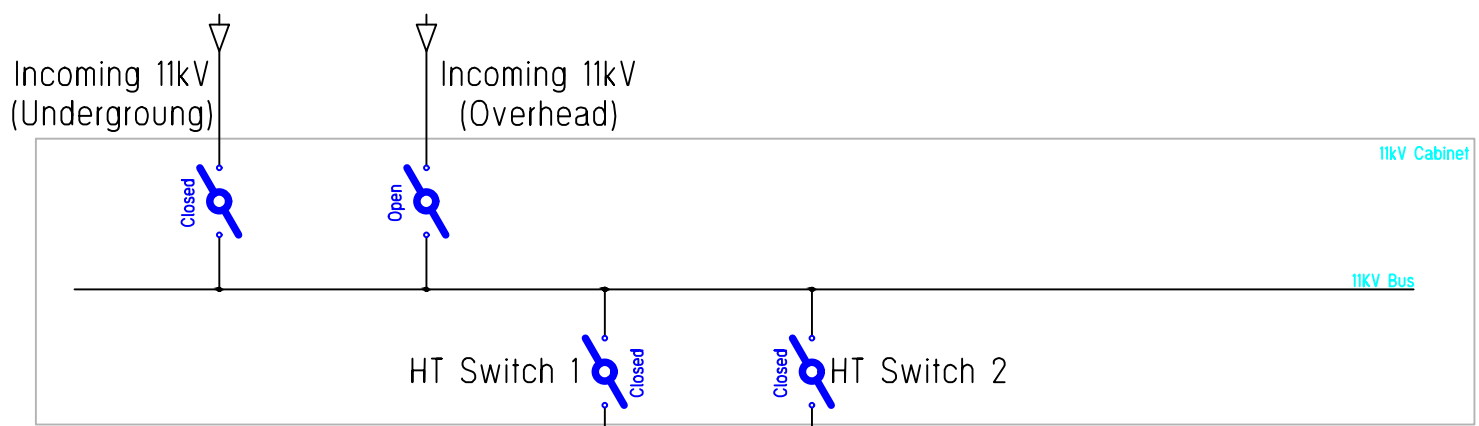


PRODUCED BY AN AUTODESK STUDENT VERSION

PRODUCED BY AN AUTODESK STUDENT VERSION



TX 1		TX 2	
SERIAL No.	100239803	SERIAL No.	100239804
RATING	800	RATING	800
VOLTS (no load)	11000	VOLTS (no load)	11000
VOLTS (full load)	433	VOLTS (full load)	433
AMPERE	42	AMPERE	42
IMPEDANCE %	1067	IMPEDANCE %	1067
PHASES	4.77	PHASES	4.70
FREQUENCY	3	FREQUENCY	3
CONNECTION SYMBOL	50	CONNECTION SYMBOL	50
TYPE OF COOLING	Dyn11	TYPE OF COOLING	Dyn11
INSULATING LIQUID	ONAN	INSULATING LIQUID	ONAN
TEMP RISE (OIL/LIQUID)	OIL	TEMP RISE (OIL/LIQUID)	OIL
TEMP RISE (WINDINGS)	60	TEMP RISE (WINDINGS)	60
ALTITUDE	65	ALTITUDE	65
UNTANKING MASS	-	UNTANKING MASS	-
TOTAL MASS	1120	TOTAL MASS	1120
MASS OF LIQUID	2390	MASS OF LIQUID	2390
YEAR OF MANUFACTURE	525	YEAR OF MANUFACTURE	525
DIAGRAM OF CONNECTION	2007	DIAGRAM OF CONNECTION	2007
	17569		17569

Output of switchgear continues onto the Variable Frequency Drives (VFDs) which then powers the motors/pumps.

Drawing Name: Belle Pumping Station Single Line Diagram

Drawn By: Anthony Franklyn